

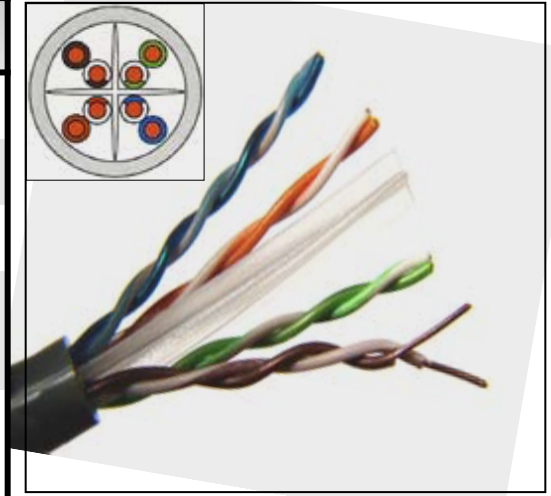
DATA SHEET COPPER CABLE

U/UTP CAT 6 EC VERIFIED – SOLID CONDUCTOR

This cable is compliant to ANSI/TIA-568-C.2, ISO/IEC 11801 and EN 50173

CONSTRUCTION

| | |
|------------------|---|
| Conductor | 23 AWG solid bare copper |
| Insulation | Polyolefin |
| Pairs | 4 Twisted pairs with cross divider |
| Pair Colour Code | Blue/White-Blue, Orange/White-Orange, Green/White-Green, Brown/White-Brown |
| Sheath | PVC Also available on request: 1) Low Smoke Zero Halogen (LSZH) 2) UV resistant PVC (Black only - without sheath markings) |



ELECTRICAL CHARACTERISTICS STANDARD FOR CATEGORY 6

| Frequency MHz | Attenuation dB/100 m | NEXT dB | PSNEXT dB | ACR | PSACR | ELFEXT dB | PSELFEXT dB | Return Loss |
|---------------|----------------------|---------|-----------|------|-------|-----------|-------------|-------------|
| 1 | 2.0 | 74.3 | 72.3 | 72.3 | 70.3 | 67.8 | 64.8 | 20.0 |
| 4 | 3.8 | 65.3 | 63.3 | 61.5 | 59.5 | 55.8 | 52.8 | 23.0 |
| 8 | 5.3 | 60.8 | 58.8 | 55.4 | 53.4 | 49.7 | 46.7 | 24.5 |
| 10 | 6.0 | 59.3 | 57.3 | 53.3 | 51.3 | 47.8 | 44.8 | 25.0 |
| 16 | 7.6 | 56.2 | 54.2 | 48.6 | 46.7 | 43.7 | 40.7 | 25.0 |
| 20 | 8.5 | 54.8 | 52.8 | 46.3 | 44.3 | 41.8 | 38.8 | 25.0 |
| 25 | 9.5 | 53.3 | 51.3 | 43.8 | 41.8 | 39.8 | 36.8 | 24.3 |
| 31.25 | 10.7 | 51.9 | 49.9 | 41.1 | 39.2 | 37.9 | 34.9 | 23.6 |
| 62.5 | 15.4 | 47.4 | 45.4 | 32 | 30 | 31.9 | 28.9 | 21.5 |
| 100 | 19.8 | 44.3 | 42.3 | 24.5 | 22.5 | 27.8 | 24.8 | 20.1 |
| 200 | 29.0 | 39.8 | 37.8 | 10.8 | 8.8 | 21.8 | 18.8 | 18.0 |
| 250 | 32.8 | 38.3 | 36.3 | 5.5 | 3.5 | 19.8 | 16.8 | 17.3 |

ELECTRICAL CHARACTERISTICS @ 20°C

| | |
|-----------------------------|---|
| DC Resistance: | 80 Ohms/km (Max) |
| Resistance Unbalance: | 2% (Max) |
| Mutual capacitance @ 1 kHz: | 42 nF/km (Max) |
| Capacitance Unbalance: | 1000 pF/km (Max) |
| Delay Skew: | 450 nsec/km (Max) |
| Velocity of Propagation: | 0.68 c |
| Characteristic Impedance: | 100 Ohms ± 15% @ 1.0 Mhz – 100 Mhz |
| Characteristic Impedance: | 100 Ohms ± (15 + 0.05(f-100)) @ 100 Mhz – 250 Mhz |

PHYSICAL PROPERTIES & PACKING

| | |
|-------------------------|---|
| Fire safety Rating: | IEC 60332 Part 1 |
| Outside Diameter (Nom): | 6.3 mm |
| Weight (kg/km): | 52.5 |
| Temperature Range: | 0° C to +50° C (Installation) -20° C to +70° C (Operational) |
| Standard Packaging: | 305 m Easy Pull box (16 kg/box) (400mm x 400mm x 210mm) |